

QUICK START: Utility Management - Annual Consumption

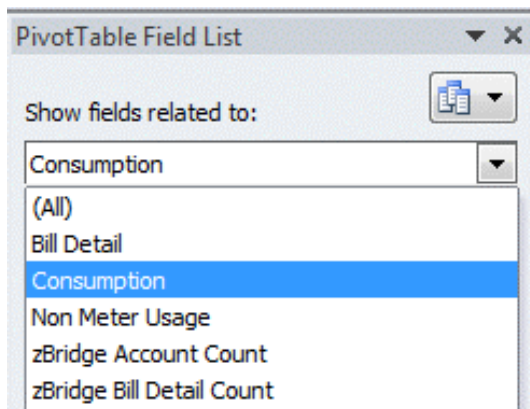
Description

In this example, you will look at how billed usage can be viewed over the years.

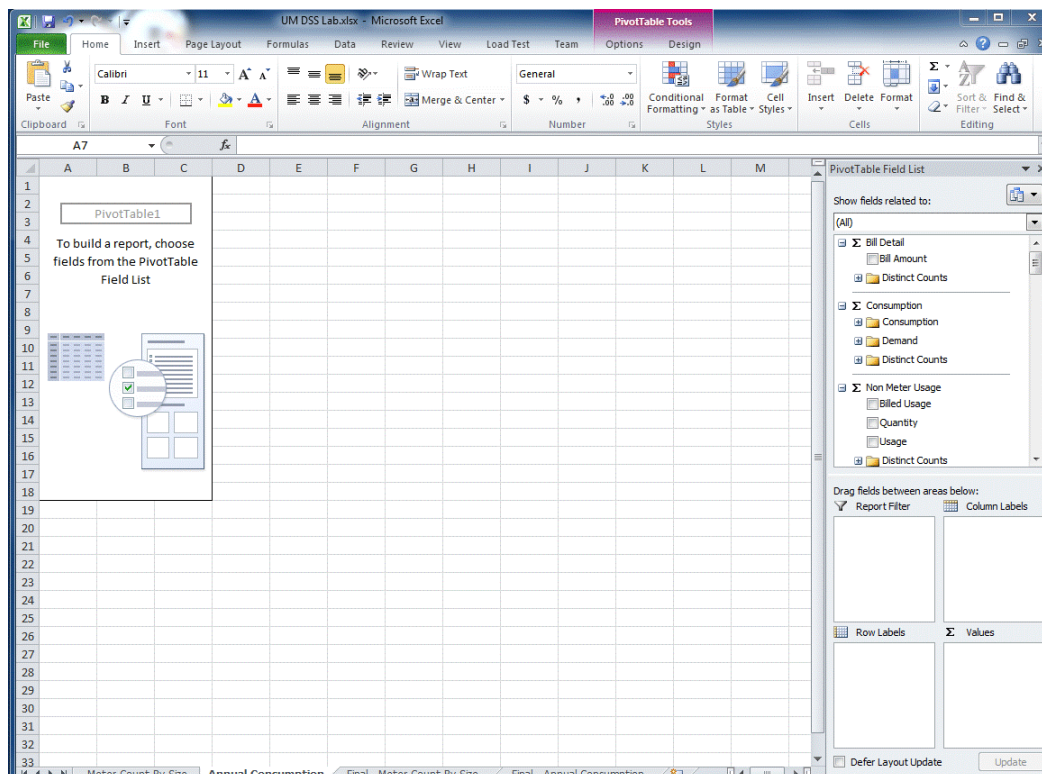
Walkthrough

Open the **UM Annual Consumption.xlsx** template. Change the data source to the General Ledger cube as outlined in the Changing a Template's Data Source Quick Start.

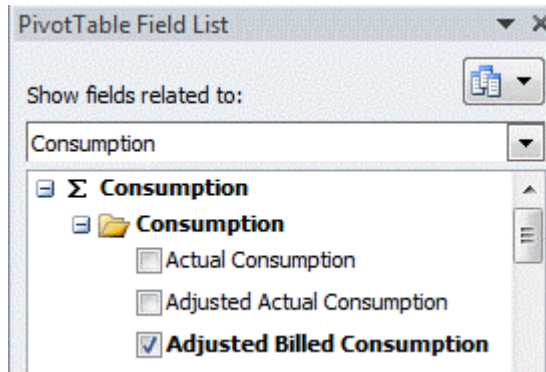
Select Consumption from the **Show fields related to:** drop-down list.



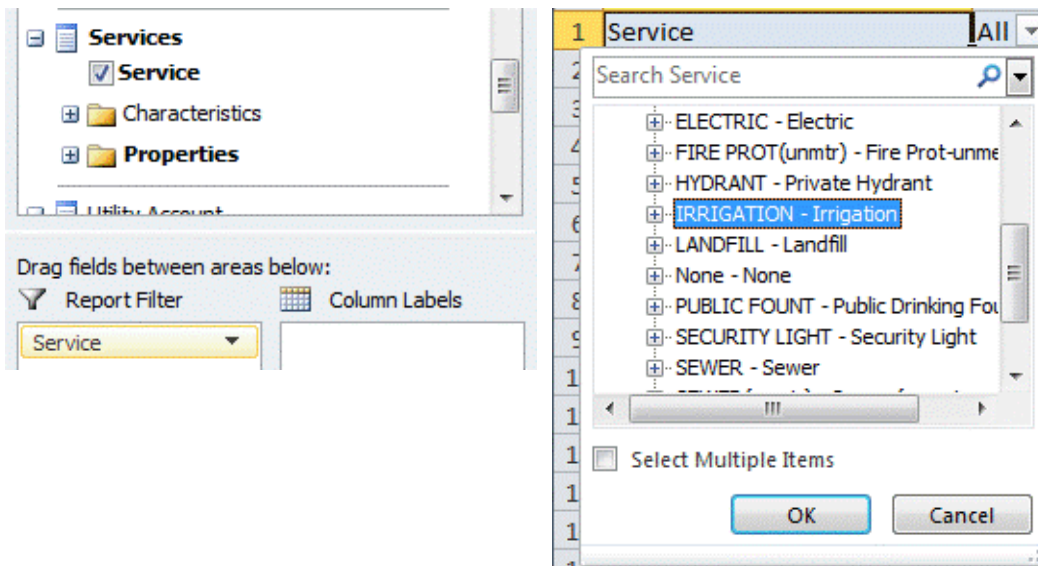
You should see the pivot table below.:



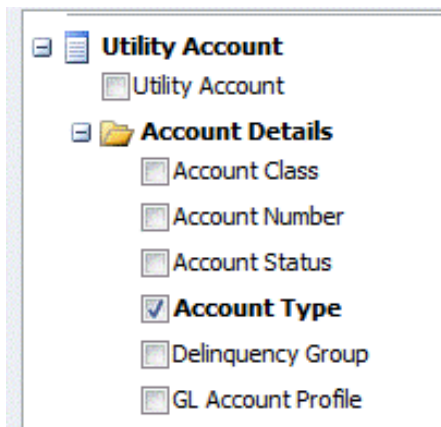
To start, add the **Adjusted Billed Consumption** by clicking the appropriate check box under the **Consumption** folder. Adjusted Billed Consumption is Billed Consumption considering any Malfunction Work Order Adjustments that have been entered.



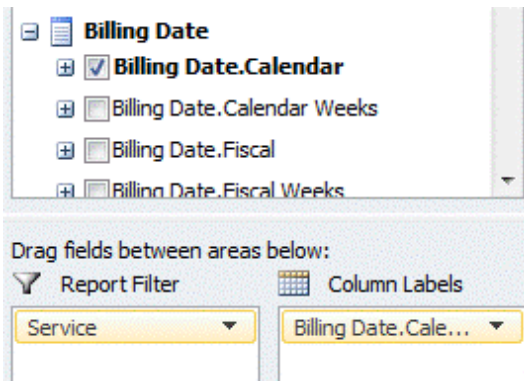
Filter Consumption to only those that fueled a specific service. Drag the **Service** attribute under **Services** into the **Report Filter** area. Then select the Irrigation service (for example) from the filter on the pivot table.



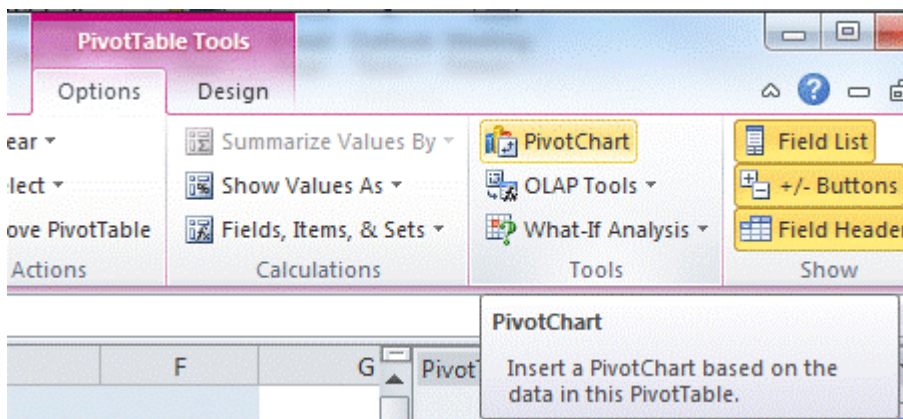
Next, select **Account Type** under **Account Details** on **Utility Account** to break this total down into different types.

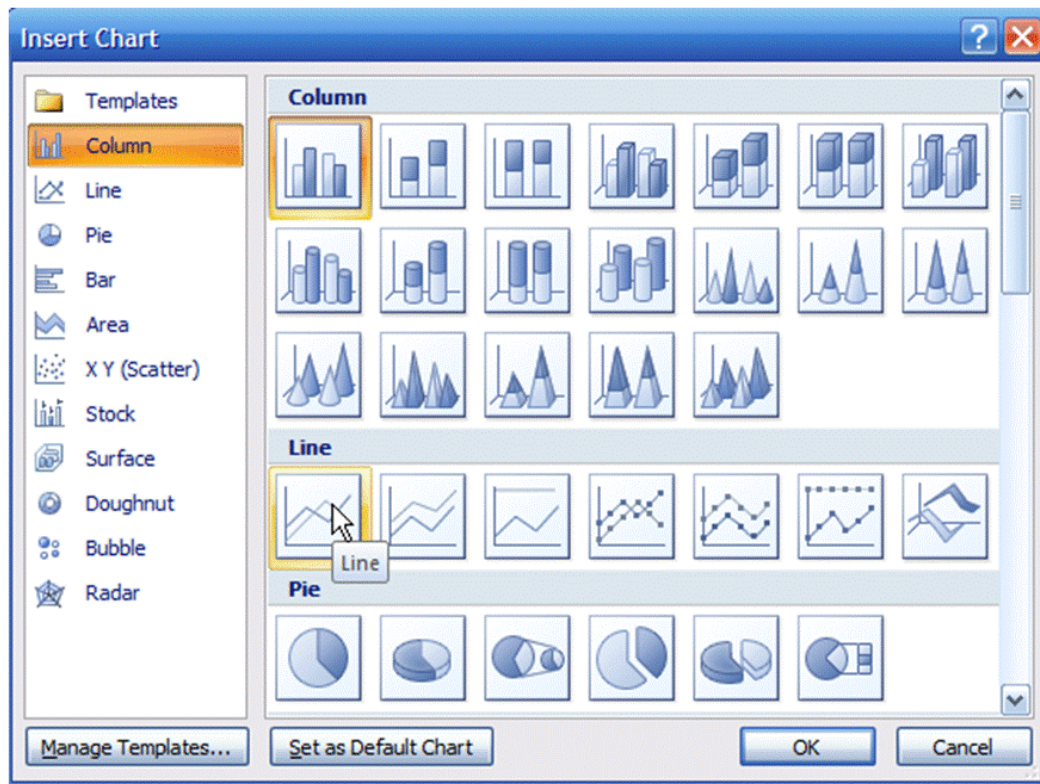


To see the year-over-year view of the usage, drag the **BillingDate.Calendar** hierarchy to the **Columns Labels** area.

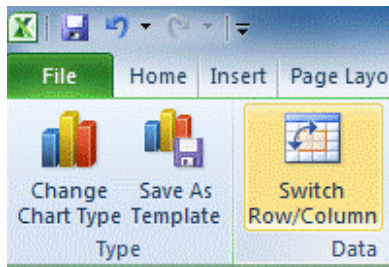


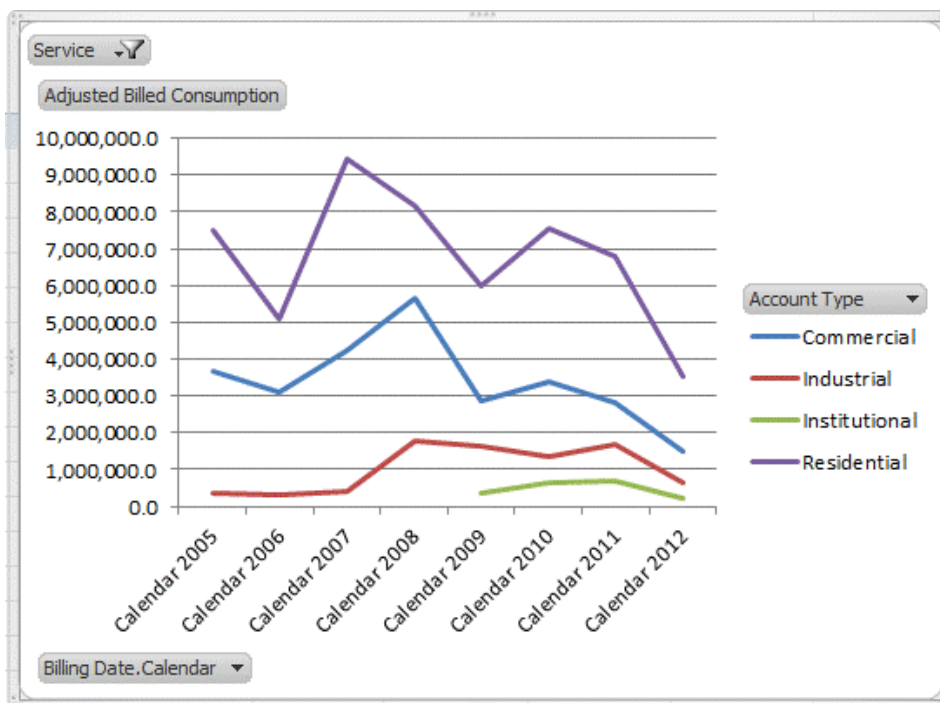
Then, to visually represent trends in the information, we can add a pivot graph to visualize the data. Click on **Pivot Table Tools** on the menu bar in Excel and click on **Line Chart with Markers**.



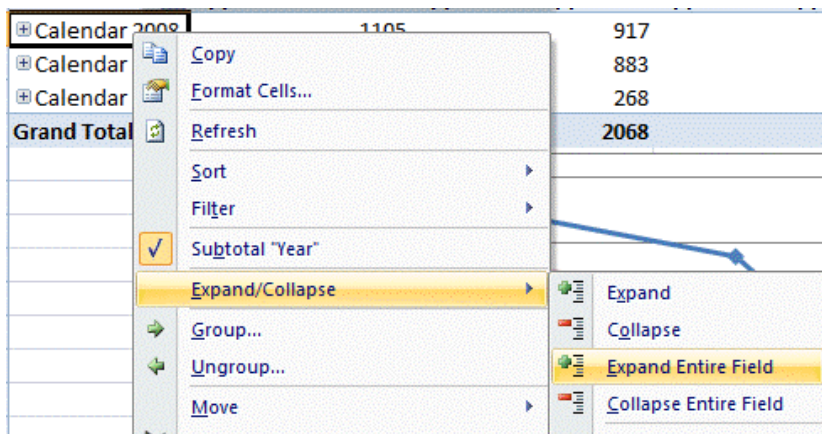


This will give us a chart that has its axis reversed. To correct this, select the Switch Row/Column option from the PivotChart Tools menu. This sets the axis on the graph to be able to see how different charge categories trend over time.

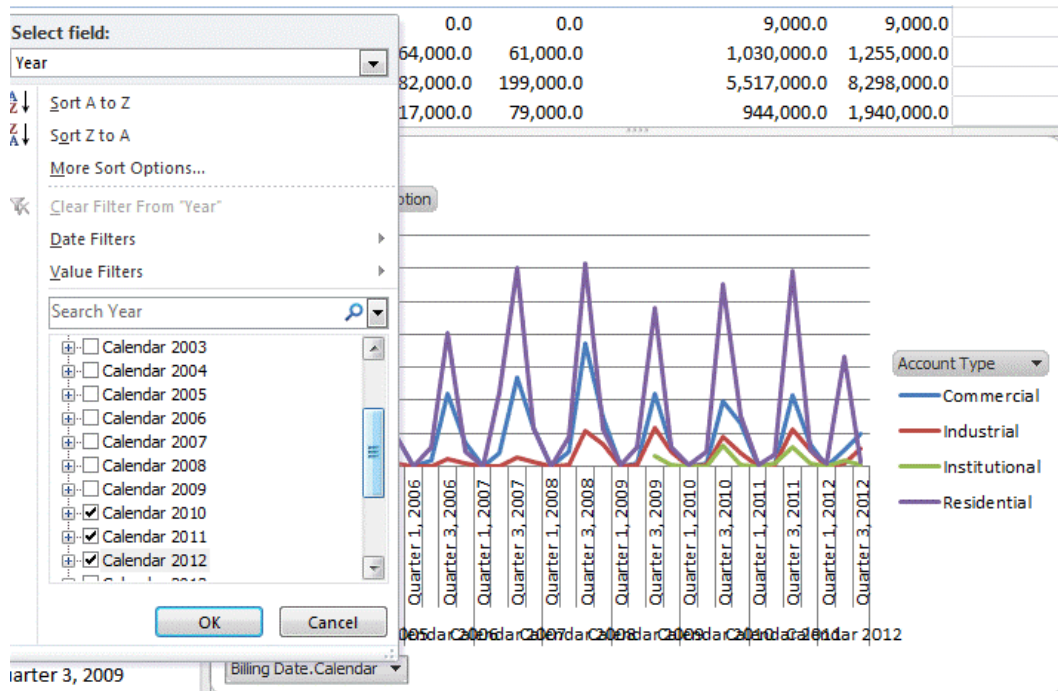




Expand the **Date** to the next level of detail by right-clicking on a date and selecting **Expand/Collapse > Expand Entire Field**.



The resulting graph is hard to read so let's limit the years down to the last three years. Click on the **BillingDate.Calendar** drop-down on the chart and select only the last three years.



As might be expected, there is a spike in Irrigation usage during the third quarter each year with the current year trailing off since all of the data does not yet exist.

